

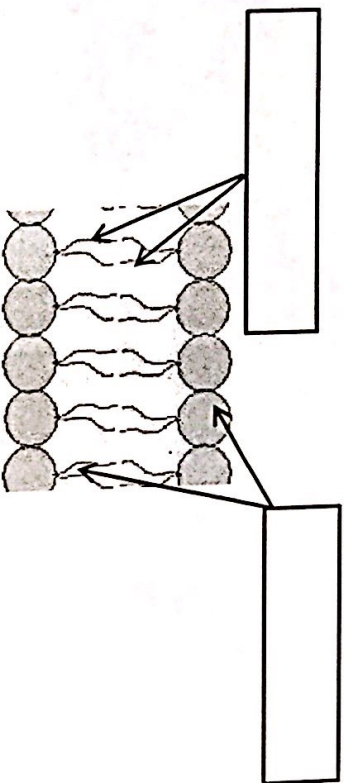
The Cell Membrane Notes

Functions:

- ✓ _____ and _____ the cell
- ✓ _____ the _____ of materials in & out of the cell

Structure:

- **Lipid Bilayer:** a _____ sheet of _____ that makes up the cell membrane.



The Fluid Mosaic Model:

- The cell membrane is made of many _____ that _____.

Selectively Permeable:

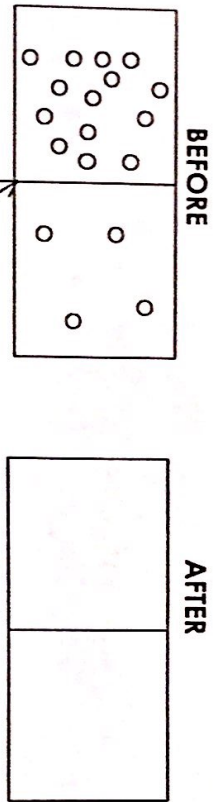
- _____ substances can _____ through the cell membrane. But **others can't**.
- _____ means "porous" or "pass through"

Passive Transport:

- Movement of substances into/out of cell _____ using _____.
- _____ → _____ **concentration**
- **3 types:**
 1. Simple Diffusion
 2. Facilitated Diffusion
 3. Osmosis

Simple Diffusion:

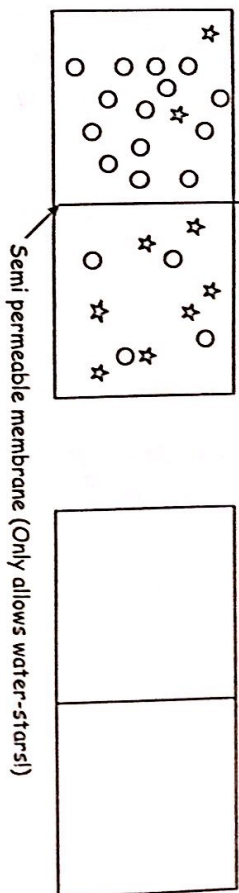
- Molecules move from HIGH to LOW concentration (concentration gradient)
- Until balanced or equal- " _____ "



Semi permeable membrane (allows molecules to cross)

Osmosis:

- Diffusion of _____ through special channels called _____.
- Moves from HIGH to LOW concentration.

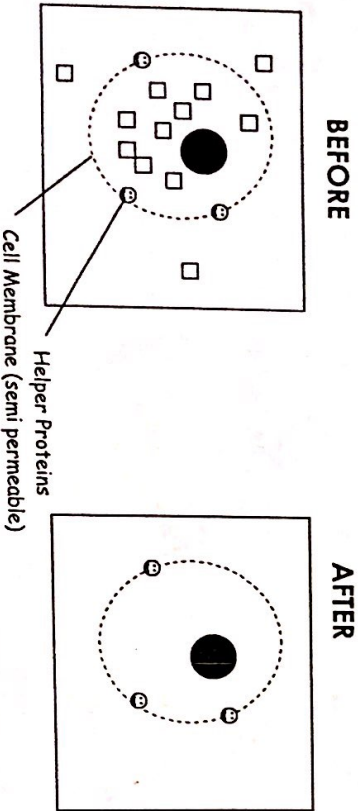


Semi permeable membrane (Only allows water-stars)

Facilitated Diffusion:

Some molecules can't diffuse through the membrane and _____ to move through.

Ex. Ions, glucose



*Helper Proteins
Cell Membrane (semi permeable)*

Solvent + Solute = Solution

_____ : does the dissolving, like water
 _____ : substance that gets dissolved in the solvent

Isotonic "same or equal"	Hypertonic "above or higher"	Hypotonic "below or lower"
EQUAL amounts of solute in/out of cell.	HIGHER solute outside.	LOWER solute outside.
Water in/out. Cell stays the same.	Water out. Cell shrinks.	Water in. Cell swells.